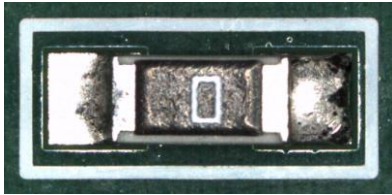


# TECHNOLOGICALLY ADVANCED

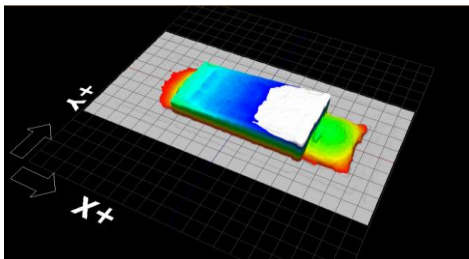
## MV-9 Series

# MIRTEC

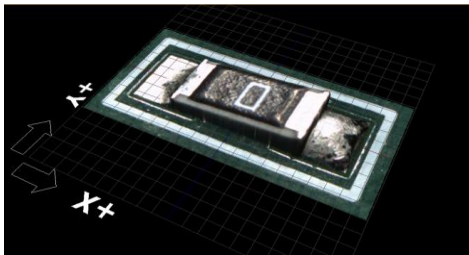
- Five Camera 2D/3D In-Line AOI System
- Exclusive **FIFTEEN MEGA PIXEL** ISIS Vision System
- Advanced Six Phase Color Lighting Technology
- 10 Micron / Pixel Telecentric Compound Lens Design
- Integrated Ten Mega Pixel **SIDE VIEWER**® Camera System
- Precision Linear Drive Motor Design
- Extremely Simple Programming and Operation



15MP 2D Image



3D Shape Image - \*Lifted Device



Advanced 2D/3D Image Processing



- Exclusive **OMNI-VISION**® 3D Inspection Technology
- Advanced Digital Multi Frequency Quad Moire Design
- Superior Lifted Lead Detection for Gull Wing Devices
- True Co-Planarity Inspection of Chips, BGAs and Other Height Sensitive Devices



[www.mirtec.com](http://www.mirtec.com)

## MV-9 Series Features and Specifications

### Standard Features:

- Intel © Core™2 Duo PC, 24" Flat Screen LCD Monitor, Windows 7™ OS, HDD, Mouse & Keyboard, Network LAN Card.
- Fifteen Mega Pixel ISIS Digital Color Camera System (See Specifications).
- Omni-Vision 3D Inspection System - Digital Multi Frequency Quad Moire' Technology.
- Three (3) Stage High Speed Conveyor System with Programmable Width Control and Automatic PCB Support.
- Advanced Six Phase Color LED Lighting System.
- Pre and Post Reflow Inspection Capability.
- Automatic Teaching Software w/ Comprehensive Package Type Library for Simple "Drag and Drop" Programming.
- Local Software: Repair Plus Software, Statistical Process Control (SPC) Software.

### Options:

- Side View Camera System - Quantity (4) Ten Mega Pixel Side View Digital Color Cameras (See Specifications).
- 2D Bar Code Reader - Gun Type - 2D Bar Code Reading Capability Using Handheld Gun Type Reader.
- 2D Bar Code Reader - Camera Type - 2D Bar Code Reading Capability Using the Top Down Camera System.
- Remote Software (PC Required): Off Line Programming, Remote Repair Plus, Remote SPC, Remote Management.

### System Specifications:

Top-Down View Camera Options	Field Of View	Resolution
15MP ISIS (3,904 x 3,904) Camera Option 1	58.56mm x 58.56mm (2.31" x 2.31")	15 Mega Pixels @ 15 um/pixel
15MP ISIS (3,904 x 3,904) Camera Option 2	39.04mm x 39.04mm (1.54" x 1.54")	15 Mega Pixels @ 10 um/pixel

<b>Side View Camera System</b>	10 MEG: Quantity (4) Ten Mega Pixel (3,664 x 2,736) Digital Color Cameras
<b>Top-Down Camera Lens</b>	Precision Telecentric Compound Lens Design
<b>Top Side Clearance</b>	45mm (1.77")
<b>Bottom Side Clearance</b>	50.8mm (2.0") From Bottom of PCB Surface
<b>Minimum Component Inspection</b>	01005 Chip Component.
<b>Robot Positioning System</b>	Precision Linear Drive Motor System
<b>Resolution</b>	6 um (.000236 in.)
<b>Repeatability</b>	±15 um (± 0.000591 in.)
<b>Maximum Inspection Speed</b>	0.37sec / frame - 8.946 mm <sup>2</sup> / sec (11.046 in <sup>2</sup> / sec)
<b>Power Requirements</b>	Single Phase 208 VAC ± 10%; 50/60 Hertz; 5 Amps
<b>Air Requirements</b>	0.5Kqf / cm <sup>2</sup> (7 PSI)

Model Number	PCB Size Range
MV-9	50mm x 50mm to 510mm x 460mm (2.0"x2.0" to 20.1" x 18.1")
MV-9U	50mm x 50mm to 660mm x 610mm (2.0"x2.0" to 26.0" x 24.1")

Model Number	Machine Dimensions
MV-9	1,100mm W x 1,530mm D x 1,500mm H (43.3" x 60.2" x 59.1")
MV-9 w/ 350mm Side Rails and Light Tower	1,800mm W x 1,530mm D x 1,985mm H (70.9" x 60.2" x 78.2")
MV-9U	1,270mm W x 1,680mm D x 1,500mm H (50.0" x 66.2" x 59.1")
MV-9U w/ 500mm Side Rails and Light Tower	2,270mm W x 1,680mm D x 1,985mm H (89.4" x 66.2" x 78.2")

Model Number	Weight
MV-9	1,000 kg (2,204 lbs)
MV-9U	1,050 kg (2,314 lbs)