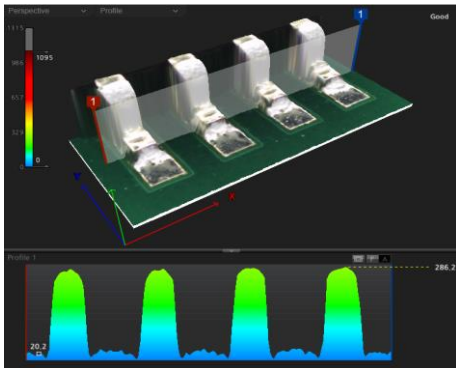


TECHNOLOGICALLY ADVANCED

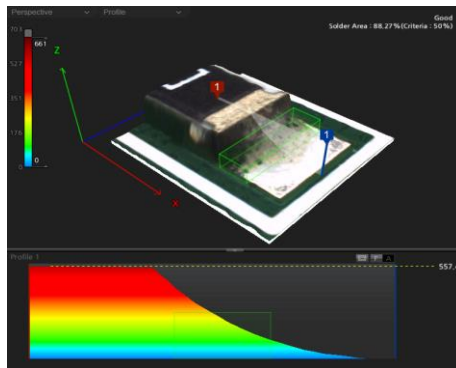
MV-6 OMNI 3D Series

MIRTEC

- High-Speed / High-Performance **3D AOI MACHINE**
- **FIFTEEN MEGA PIXEL** CoaXPress Camera Technology
- Advanced Eight Phase Color Lighting System
- Ten Micron / Pixel Precision Telecentric Compound Lens Design
- Integrated Ten Mega Pixel **SIDE-VIEWER®** Camera System
- Precision Closed Loop AC Servo Drive Motor System
- Extremely Simple Programming and Operation



3D Co-Planarity Inspection - Gull Wing Device



3D Solder Fillet Inspection Capability



- Exclusive **OMNI-VISION®** 3D Inspection Technology
- Superior Lifted Lead Detection for Gull Wing Devices
- **FULL 3D** Co-Planarity and Solder Fillet Inspection Capability
- Superior Defect Detection, Absolute Lowest False Call Rate



www.mirtec.com

MV-6 OMNI Series Features and Specifications

| Max PCB Size Range | |
|-----------------------------|---|
| MV-6 OMNI (10um Resolution) | 50 mm x 50 mm to 480 mm x 460 mm (2.0" x 2.0" to 18.9" x 18.1") |
| MV-6 OMNI (15um Resolution) | 50 mm x 50 mm to 460 mm x 460 mm (2.0" x 2.0" to 18.1" x 18.1") |

| Image Transfer Technology | | | |
|---------------------------|---------------------|-----------|---------|
| 15 Mega Pixel | 3,904 x 3,904 Pixel | CoaXpress | 120 fps |

| OMNI-VISION® Inspection System | | |
|--------------------------------|---|---|
| 3D Inspection Technology | Digital Multi-Frequency Quad Moiré Technology | |
| 2D Inspection Technology | 15 Mega Pixel CoaXPress Camera System | |
| Height Accuracy | ±3 um | |
| Inspection Item | 2D Inspection | Missing Component, Wrong Component, Mis-Alignment, Skewed Component, Polarity, Tombstone, Bridge, Flipped, Solder Ball, Etc |
| | 3D Inspection | Height, Position, Lifted Package, Lifted Lead, Solder Fillet, Excessive Solder, Insufficient Solder, Open Solder, Etc |

| Vision System (FOV Size) | | | | |
|----------------------------|----------------------|----------|-------------------------|-------------------------------------|
| 15 Mega Pixel Camera | 3,904 x 3,904 Pixels | Option 1 | Pixel Resolution :15 um | 58.56 mm x 58.56 mm (2.31" x 2.31") |
| | | Option 2 | Pixel Resolution :10 um | 39.04 mm x 39.04 mm (1.54" x 1.54") |

| 2D Maximum Inspection Speed | | | | | |
|-----------------------------|---------------------|----------|-------------------------|----------------|-------------------------------|
| 15 Mega Pixel Camera | CoaXpress @ 120 fps | Option 1 | Pixel Resolution :15 um | 0.32 sec / FOV | 10,716 mm2/sec (16.6 in2/sec) |
| | | Option 2 | Pixel Resolution :10 um | 0.30 sec / FOV | 5,080 mm2/sec (7.87 in2/sec) |

| 3D Maximum Inspection Speed | | | | | |
|-----------------------------|---------------------|----------|-------------------------|----------------|------------------------------|
| 15 Mega Pixel Camera | CoaXpress @ 120 fps | Option 1 | Pixel Resolution :15 um | 0.77 sec / FOV | 4,454 mm2/sec (6.9 in2/sec) |
| | | Option 2 | Pixel Resolution :10 um | 0.75 sec / FOV | 2,032 mm2/sec (3.15 in2/sec) |

| System Specifications | | |
|------------------------------|--|---|
| Lens Configuration | Precision Telecentric Compound Lens Design | |
| Lighting System | Eight Phase Color Lighting | |
| SIDE-VIEWER® Camera System | Quantity Four - 10 Mega Pixel (3,664 x 2,736) Color Side Angle Cameras | |
| PCB Top Side Clearance | 45 mm | |
| PCB Bottom Side Clearance | 50.8mm (2.0") from bottom of PCB surface | |
| Maximum PCB Warpage | ±3 mm | |
| Barcode System (Option) | 1D or 2D Barcode Reader | |
| Built-in SPC | Statistical Process Control Software (Local) | |
| Built-in Repair | Repair Plus Software (Local) | |
| OLTT (Option) | Off-Line Teach Tool Software | |
| Minimum Component Inspection | 0402 Chip (mm) / 01005 Chip (in) / 0.3 Pitch (mm) | |
| Robot Positioning System | X/Y Axis | Precision Closed Loop AC Servo Drive Motor System |
| | Resolution | 1 um |
| | Repeatability | ±10 um |
| Power Requirements | Single Phase 200~240V 50~60Hz; 1.1 KW | |
| Air Requirements | 5 Kgf/cm2 (0.5 Mpa); (71 PSI) | |

| Machine Dimensions and Weight | | |
|-------------------------------|---|---------------------|
| MV-6 OMNI | 1,080 mm W x 1,470 mm D x 1,500 mm H (42.5" x 57.87" x 59.1") | 950 kg (2,094 lbs.) |

