

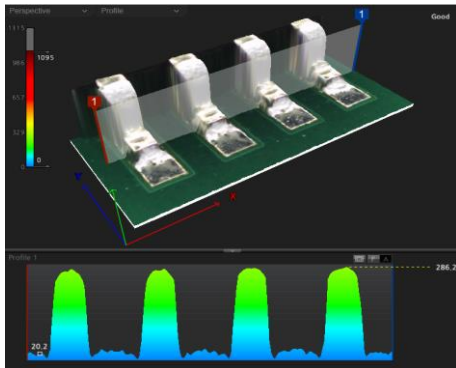
TECHNOLOGICALLY ADVANCED

MV-6 OMNI 3D AOI Series

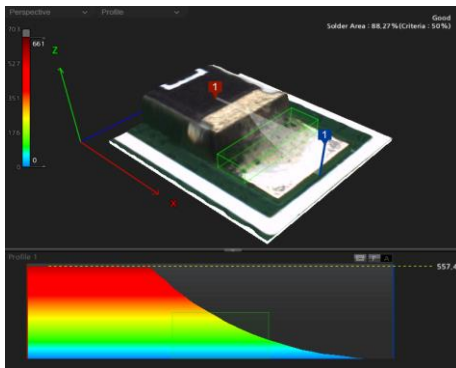
MIRTEC

CoaXPress

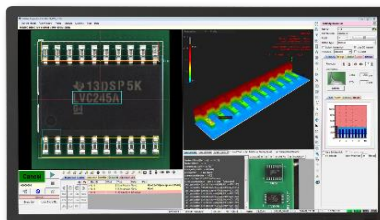
- High-Speed / High-Performance **3D AOI MACHINE**
- **FIFTEEN MEGA PIXEL** CoaXPress Camera Technology
- Advanced Eight Phase Color Lighting System
- Ten Micron / Pixel Precision Telecentric Compound Lens Design
- Integrated Ten Mega Pixel **SIDE-VIEWER®** Camera System
- Precision Closed Loop AC Servo Drive Motor System
- Extremely Simple Programming and Operation



3D Co-Planarity Inspection - Gull Wing Device



3D Solder Fillet Inspection Capability



- Exclusive **OMNI-VISION®** 3D Inspection Technology
- Superior Lifted Lead Detection for Gull Wing Devices
- **FULL 3D** Co-Planarity and Solder Fillet Inspection Capability
- Superior Defect Detection, Absolute Lowest False Call Rate



www.mirtec.com

MV-6 OMNI Series Features and Specifications

Max PCB Size Range

MV-6 OMNI (10um Resolution)	50 mm x 50 mm to 460 mm x 460 mm (2.0" x 2.0" to 18.9" x 18.1")
MV-6 OMNI (15um Resolution)	50 mm x 50 mm to 460 mm x 460 mm (2.0" x 2.0" to 18.1" x 18.1")

Image Transfer Technology

15 Mega Pixel	3,904 x 3,904 Pixel	CoaXpress	120 fps
---------------	---------------------	-----------	---------

OMNI-VISION® Inspection System

3D Inspection Technology	Digital Multi-Frequency Quad Moiré Technology		
2D Inspection Technology	15 Mega Pixel CoaXPress Camera System		
Height Accuracy	±3 um		
Inspection Item	2D Inspection	Missing Component, Wrong Component, Mis-Alignment, Skewed Component, Polarity, Tombstone, Bridge, Flipped, Solder Ball, Etc	
	3D Inspection	Height, Position, Lifted Package, Lifted Lead, Solder Fillet, Excessive Solder, Insufficient Solder, Open Solder, Etc	

Vision System (FOV Size)

15 Mega Pixel Camera	3,904 x 3,904 Pixels	Option 1	Pixel Resolution :15 um	58.56 mm x 58.56 mm (2.31" x 2.31")
		Option 2	Pixel Resolution :10 um	39.04 mm x 39.04 mm (1.54" x 1.54")

2D Maximum Inspection Speed

15 Mega Pixel Camera	CoaXpress @ 120 fps	Option 1	Pixel Resolution :15 um	0.32 sec / FOV	10,716 mm2/sec (16.6 in2/sec)
		Option 2	Pixel Resolution :10 um	0.30 sec / FOV	5,080 mm2/sec (7.87 in2/sec)

3D Maximum Inspection Speed

15 Mega Pixel Camera	CoaXpress @ 120 fps	Option 1	Pixel Resolution :15 um	0.77 sec / FOV	4,454 mm2/sec (6.9 in2/sec)
		Option 2	Pixel Resolution :10 um	0.75 sec / FOV	2,032 mm2/sec (3.15 in2/sec)

System Specifications

Lens Configuration	Precision Telecentric Compound Lens Design				
Lighting System	Eight Phase Color Lighting				
SIDE-VIEWER® Camera System	Quantity Four - 10 Mega Pixel (3,664 x 2,736) Color Side Angle Cameras				
PCB Top Side Clearance	45 mm				
PCB Bottom Side Clearance	50.8mm (2.0") from bottom of PCB surface				
Maximum PCB Warpage	±3 mm				
Barcode System (Option)	1D or 2D Barcode Reader				
Built-in SPC	Statistical Process Control Software (Local)				
Built-in Repair	Repair Plus Software (Local)				
OLTT (Option)	Off-Line Teach Tool Software				
Minimum Component Inspection	0402 Chip (mm) / 01005 Chip (in) / 0.3 Pitch (mm)				
Robot Positioning System	X/Y Axis	Precision Closed Loop AC Servo Drive Motor System			
	Resolution	1 um			
	Repeatability	±10 um			
Power Requirements	Single Phase 200~240V 50~60Hz; 1.1 KW				
Air Requirements	5 Kgf/cm2 (0.5 Mpa); (71 PSI)				

Machine Dimensions and Weight

MV-6 OMNI	1,080 mm W x 1,470 mm D x 1,500 mm H (42.5" x 57.87" x 59.1")	950 kg (2,094 lbs.)
-----------	---	---------------------

