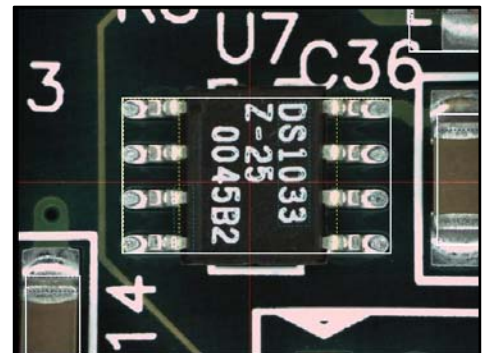


# TECHNOLOGICALLY ADVANCED

## MV-2HT Series

# MIRTEC

- High Resolution 1.3 Mega Pixel Digital Color Camera
- 100% High Intensity LED Lighting System
- Rugged Split Axis Design
- Extremely Simple Programming and Operation
- Unsurpassed Defect Detection
- "World Class" Global Customer Support



[WWW.MIRTECUSA.COM](http://WWW.MIRTECUSA.COM)

# MV-2HT Series Features and Specifications



## Standard Features:

- Pentium™ IV PC, 19" Flat Screen LCD Monitor, Windows XP™ OS, HDD, Mouse & Keyboard.
- Three (3) Layer Programmable LED Light Source (Horizontal, Vertical, Coaxial)
- Pre And Post Reflow Inspection Capability.
- Automatic Teach Tool (ATT) Software - Automatic Programming Using Centroid Data.
- Dynamic Global Component Library - Up To 99 Alternate Images Per Component.
- Comprehensive Package Type Library - Provides Simple ""Drag And Drop"" Component Programming.
- Statistical Process Control (SPC) Software (Local System Software).
- Repair Plus Software (Local System Software).
- Adjustable PCB Holder.
- Network Card For LAN Connection.
- Safety Light Curtain.

## Options:

- High Resolution 1.3 Mega Pixel Digital Color Camera System Provides Enhanced Inspection Capability.
- 45mm Clearance Option - Provides 45mm Topside Clearance.
- NG Marking System – Clearly Marks Position Of Defects With A Water Soluble Ink Marking Pen.
- Off-Line Teaching Tool (OLTT) Software For Programming At A Remote PC Workstation.
- Bar Code Reader - Gun Type Used With Remote Repair Station.
- Bar Code Reader - Camera Type - Bar Code Reading Capability Using The Top Down Camera System.
- Remote Repair System Software.
- Remote Repair / SPC System Software.
- Remote Management Software
- Remote PC - Software Preloaded (Software Purchased Separately).

## Optional Camera Configurations:

Camera Configuration	Field Of View	Resolution
Standard Analog Camera	15mm x 11.3mm (0.59" x 0.44")	640 x 480 Pixels @ 23um/pixel
1.3 Mega Pixel Camera Option 1	20.4mm x 15.3mm (0.80" x 0.60")	1.3 Mega Pixels @ 15.9 um/pixel
1.3 Mega Pixel Camera Option 2	14.0mm x 10.5mm (0.55" x 0.41")	1.3 Mega Pixels @ 10.9 um/pixel

**System Specifications:** *(subject to change without prior notice)*

	<b>MV-2HT</b>
<b>Machine Dimensions</b>	854mm W x 985mm D x 435mm H (33.6" W x 38.8" D x 17.1" H)
<b>PCB size range</b>	50mm x 50mm to 350mm x 250mm (2.0" x 2.0" to 13.8" x 9.8")
<b>Weight</b>	74kg (164 lbs)

	<b>MV-2HTL</b>
<b>Machine Dimensions</b>	970mm W x 1,130mm D x 472mm H (38.2" W x 44.5" D x 17.1" H)
<b>PCB size range</b>	50mm x 50mm to 500mm x 400mm (2.0" x 2.0" to 19.7" x 15.7")
<b>Weight</b>	94kg (207lbs)

	<b>MV-2HTX</b>
<b>Machine Dimensions</b>	960mm W x 1,196mm D x 451mm H (37.8" W x 47.1" D x 17.8" H)
<b>PCB size range</b>	50mm x 50mm to 530mm x 460mm (2.0" x 2.0" to 20.8" x 18.1")
<b>Weight</b>	106kg (234 lbs)

	<b>MV-2HTU</b>
<b>Machine Dimensions</b>	1,088mm W x 1,408mm D x 486mm H (42.8" W x 55.4" D x 19.1" H)
<b>PCB size range</b>	50mm x 50mm to 660mm x 510mm (2.0" x 2.0" to 25.9" x 20.1")
<b>Weight</b>	123kg (271 lbs)

<b>Top Side Component Clearance</b>	Standard Configuration - 25mm (0.98"); Optional 45mm (1.77")
<b>Bottom Side Component Clearance</b>	50.8mm (2.0") from bottom of PCB surface
<b>Min. Component Absence/Presence</b>	01005 chip component.
<b>Inspection Speed</b>	0.20 sec / frame.
<b>Fiducial Mark Recognition Time</b>	1.5 sec / 2 point
<b>Positioning System</b>	High Precision Micro Stepper Drive System
<b>Resolution</b>	6 $\mu$ m (.000236 in.)
<b>Repeatability</b>	$\pm$ 15 $\mu$ m ( $\pm$ 0.000591 in.)
<b>Maximum Inspection Speed</b>	0.22 sec / frame - 4,940 mm <sup>2</sup> / sec (7.657in <sup>2</sup> / sec)
<b>Power Requirements</b>	Single Phase 85-264 VAC; 50/60 Hertz; 5 Amps
<b>Temperature Range</b>	10 ~ 40 Degrees Celsius ( 50 ~ 104 Degrees Fahrenheit)
<b>Humidity Range</b>	30 ~ 80% RH